

Evolveum

Resource Wizard

Lukáš Škublík / November 2023
Java Developer

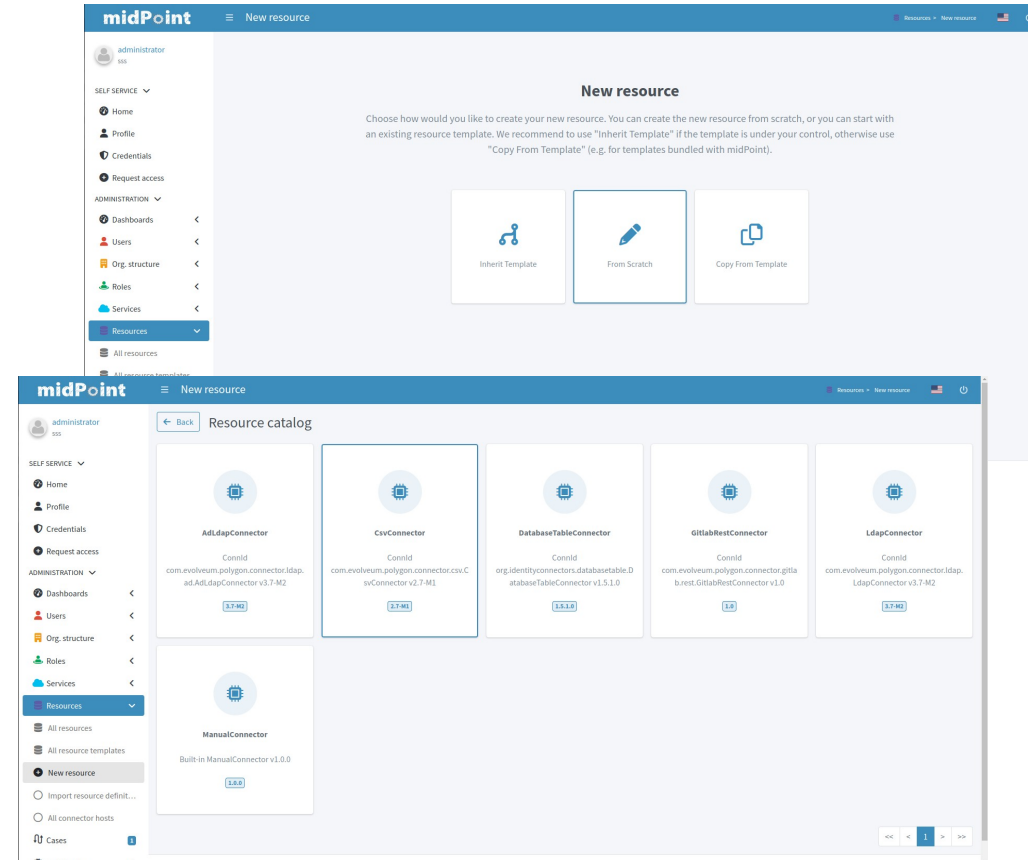
Agenda

- Create a resource from scratch
 - Create an empty resource
 - Create an object type definition
 - Adding all the configurable parts of the object type definition, such as mappings, synchronization, correlation, etc.
- Create a resource by inheriting from the template
- Create a resource by copying from the template
- The entire presentation was created for midPoint version 4.8.1



Resource Wizard

- Simple to use
- Separation into smaller understandable parts
- Interactive and iterative
- During implementation, we discovered that we need
 - Template
 - Predefined activation mappings
 - Discovery function of connector



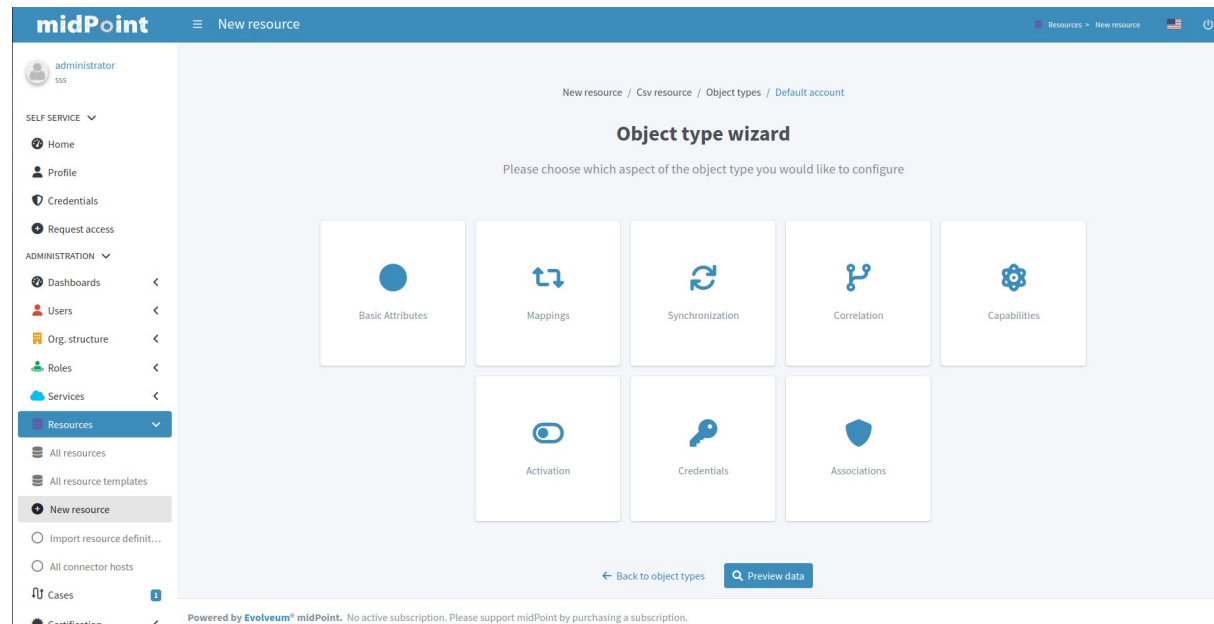
Resource Wizard

- Three types of screens
 - Wizard step panel
 - Panel for selecting configuration part
 - Table for a multi-value container

The screenshot displays the 'midPoint' 'New resource' wizard. The interface features a top navigation bar with the 'midPoint' logo and a breadcrumb trail 'Resources > New resource'. A left sidebar menu categorizes options into 'SELF SERVICE' (Home, Profile, Credentials, Request access) and 'ADMINISTRATION' (Dashboards, Users, Org. structure, Roles, Services, Resources, All resources, All resource templates, New resource, Import resource definit..., All connector hosts, Cases, Configuration). The 'New resource' step is highlighted. The main content area shows a progress bar with four steps: 1. Basic Information, 2. Configuration, 3. Discovery, and 4. Schema. Below the progress bar, the title 'Basic information about the resource' is followed by a subtitle: 'Fill in basic information about your resource and for more optional settings click on "Show empty fields" button'. A form titled 'Basic information' contains fields for 'Name' (with a hint icon and a dropdown menu showing 'Csv resource'), 'Description' (with a hint icon and a text area), and 'Lifecycle state' (with a hint icon and a dropdown menu showing 'Proposed'). A 'Show empty fields' button is located below the form. At the bottom of the form, there are 'Back' and 'Next: Configuration' buttons. A footer note states: 'Powered by Evolveum® midPoint. No active subscription. Please support midPoint by purchasing a subscription.'

Resource Wizard

- Three types of screens
 - Wizard step panel
 - **Panel for selecting configuration part**
 - Table for a multi-value container



Resource Wizard

- Three types of screens
 - Wizard step panel
 - Panel for selecting configuration part
 - **Table for a multi-value container**

The screenshot shows the 'midPoint' application interface. The top navigation bar includes the 'midPoint' logo, a 'New resource' button, and a breadcrumb trail: 'Resources > New resource'. A left sidebar contains a user profile 'administrator' and two main sections: 'SELF SERVICE' (with links to Home, Profile, Credentials, and Request access) and 'ADMINISTRATION' (with links to Dashboards, Users, Org. structure, Roles, Services, Resources, All resources, All resource templates, New resource, Import resource definit..., All connector hosts, Cases, and Certificates). The 'Resources' link is currently selected. The main content area is titled 'Object type manager' and includes a subtitle: 'Here is a table with all the objects available in the selected resource, manage existing or create a new one'. Below this is a table with columns: 'Display name', 'Kind', 'Intent', 'Default', 'Description', and 'Lifecycle state'. An 'Add object type' button is located below the table. The table itself is empty, showing 'No matching result found.' and a 'Rows per page' dropdown set to '20'. An 'Exit wizard' button is positioned below the table. At the bottom of the page, a footer states: 'Powered by Evolveum® midPoint. No active subscription. Please support midPoint by purchasing a subscription.'

Demo

From scratch

Wizard Configuration of Step Panel

- Same configuration as for the panel
- Visibility of the items
- Identifiers for panels and configuration
 - <https://docs.evolveum.com/midpoint/reference/master/admin-gui/admin-gui-config/#object-details>

Wizard Configuration of Step Panel

```
<panel>
  <identifier>rw-connectorConfiguration-partial</identifier>
  <container>
    <identifier>required</identifier>
    <display>
      <label>PageResource.wizard.step.configuration</label>
    </display>
    <item>
      <path>connectorConfiguration/configurationProperties/jdbcUrlTemplate</path>
    </item>
    <item>
      <path>connectorConfiguration/configurationProperties/jdbcDriver</path>
    </item>
    <item>
      <path>connectorConfiguration/configurationProperties/password</path>
    </item>
    <item>
      <path>connectorConfiguration/configurationProperties/user</path>
    </item>
    <item>
      <path>connectorConfiguration/configurationProperties/port</path>
    </item>
    <item>
      <path>connectorConfiguration/configurationProperties/host</path>
    </item>
    <item>
      <path>connectorConfiguration/configurationProperties/database</path>
    </item>
  </container>
  <container>
    <visibility>hidden</visibility>
    <path>connectorConfiguration/configurationProperties</path>
  </container>
  <panelType>rw-connectorConfiguration-partial</panelType>
</panel>
```

Demo

Template

Resource Object Before 4.8

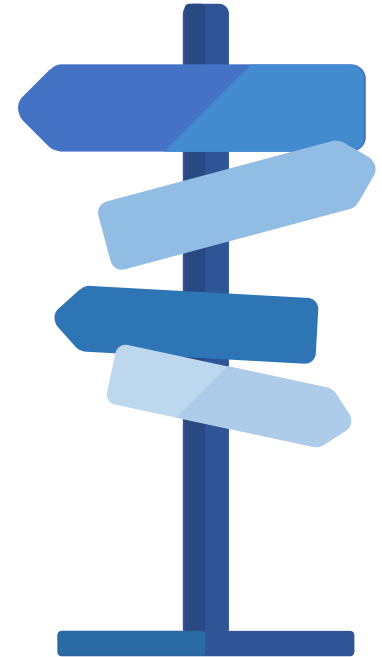
- Resources created since 4.6 works with resource wizard
- Resources created before 4.6 need to be converted to the new configuration
- We prepare the webinar for converting a resource from the old configuration to the new configuration
- Everything is in the docs!
 - <https://docs.evolveum.com/midpoint/reference/master/resources/resource-configuration/schema-handling>

Main Takeaways

- The new wizard is easy to use and saves you time
- The template is useful when using resources with the same configuration
- Everything is in the docs!
 - <https://docs.evolveum.com/midpoint/reference/master/admin-gui/resource-wizard/>

Next Webinars

- Navigation the Access Control Maze, December 5, 2023
- Simulations, December 7, 2023
- Upgrade with Ninja, January 25, 2024
- **More webinars coming in 2024**



Meet Us at TIIME

- Jan 29 - Feb 01, 2024, Copenhagen, Denmark
- MidPoint Working Group (Jan 29 – 30)
 - 3 workshops and lot of the presentations
- See the [agenda](#)
- Call for speakers
 - Contact us at marketing@evolveum.com
- Register here: <https://tiime-unconference.eu/>



Thank you for your attention

Do you have any **questions**? Feel free to contact us at info@evolveum.com

Follow us on social media or **join us** at GitHub or Gitter!



/Evolveum



@Evolveum



/Evolveum



/Evolveum



/Evolveum



/Evolveum

Evolveum

© 2023 Evolveum s.r.o. All rights reserved.